

**Jabra<sup>®</sup>**

# Jabra GO™ 6430

User Manual

---

[www.jabra.com](http://www.jabra.com)

# WELCOME

Congratulations on purchasing your new Jabra GO 6430. We are sure you will enjoy its wide range of features, and find the headset comfortable to wear and easy to use.

The Jabra GO 6430 package also includes the Jabra LINK™ 350 USB *Bluetooth*® Adapter and Jabra GO Travel Charger. The Jabra LINK 350 USB *Bluetooth*® Adapter plugs into to your computer and connects to your headset via *Bluetooth*®, enabling you to use your headset together with softphones on your PC. The Travel Charger includes compartments for both the headset and Jabra LINK 350 USB *Bluetooth*® Adapter for easy transportation.

## **Jabra GO 6430 Headset Features**

- Dual Noise Blackout microphone.
- Direct *Bluetooth*® mobile phone connectivity.
- Lightweight (under 18g).
- Fast recharge.
- Touch panel volume and mute control.
- Intuitive headset multi-function button for easy call handling.
- Earhook and headband wearing style (neckband available).
- Up to 100 meters range.

## **Jabra LINK 350 USB *Bluetooth*® Adapter Features**

- Enables headset connection to any PC using *Bluetooth*® wireless technology.
- Connects to PC via USB.
- Softphone (PC) support and control.
- Wideband audio.
- LED indicators.
- Up to 100 meters range.

## **Jabra GO Travel Charger Features**

- Recharges headset from mains power socket, or car cigarette-lighter socket (when used with car charger).
- Stores the Jabra GO 6430 and the Jabra LINK 350 USB *Bluetooth*® adapter for easy transportation.

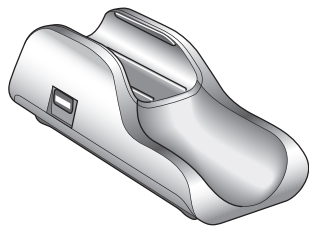
# CONTENTS

<b>1. PRODUCT OVERVIEW .....</b>	<b>5</b>
1.1 Package Contents .....	5
1.2 Headset.....	6
1.3 Headset Attachments.....	7
1.4 Jabra LINK 350 USB <i>Bluetooth</i> <sup>®</sup> Adapter .....	8
1.5 Jabra Go Travel Charger.....	8
1.6 Optional Accessories.....	9
<b>2. CONNECTING TO A PHONE.....</b>	<b>10</b>
2.1 Charging the Headset .....	10
2.2 Connect to Mobile pHONE uSING <i>Bluetooth</i> <sup>®</sup> .....	10
2.3 Connect To Softphone (PC) Using the Jabra LINK 350 USB <i>Bluetooth</i> <sup>®</sup> Adapter .....	11
<b>3. JABRA PC SUITE .....</b>	<b>12</b>
3.1 Install Jabra PC Suite.....	12
3.2 Enabling Add-on Features.....	12
3.3 Firmware Updates.....	12
<b>4. THE JABRA GO 6430 HEADSET FEATURES .....</b>	<b>13</b>
4.1 Headset Multi-function Button.....	13
4.2 Headset Touch Panel.....	13
4.3 Headset LED Indicator.....	14
4.4 Headset Audio Indicators.....	15
<b>5. JABRA LINK 350 USB <i>BLUETOOTH</i><sup>®</sup> ADAPTER FEATURES... </b>	<b>16</b>
5.1 Jabra LINK 350 USB <i>Bluetooth</i> <sup>®</sup> Adapter Button .....	16
5.2 Jabra LINK 350 USB <i>Bluetooth</i> <sup>®</sup> Adapter Visual Indicators .....	16

<b>6.</b>	<b>CALL MANAGEMENT .....</b>	<b>17</b>
6.1	Making Calls, Answering Calls, and Ending Calls.....	17
6.2	Call Waiting.....	17
6.3	Call Collision.....	17
6.4	Last Number Redial.....	17
<b>7.</b>	<b>ADVANCED JABRA GO 6430 FEATURES .....</b>	<b>18</b>
7.1	Safetone™ Hearing Protection.....	18
7.2	Wireless Range.....	18
7.3	Wideband Audio.....	18
7.4	Voice Announcements .....	18
7.5	Tone Settings .....	19
7.6	Automatic PC Audio Detection.....	19
7.7	Listening to Music.....	19
7.8	Theft Protection.....	19
<b>8.</b>	<b>FAQS AND TROUBLESHOOTING.....</b>	<b>20</b>
<b>9.</b>	<b>TECHNICAL SPECIFICATIONS .....</b>	<b>21</b>
9.1	Jabra GO 6430 Headset .....	21
9.2	Jabra GO 6430 Headset Battery.....	21
9.3	Jabra LINK 350 USB <i>Bluetooth</i> ® ADAPTER.....	22
9.4	JABRA GO 6430 Travel Charger .....	22
9.5	Materials and Allergies .....	23
9.6	Product Disposal.....	23
9.7	Certifications and Safety Approvals.....	23

# 1. PRODUCT OVERVIEW

## 1.1 PACKAGE CONTENTS



Travel Charger



Headset



Jabra LINK 350 USB  
Bluetooth® Adapter



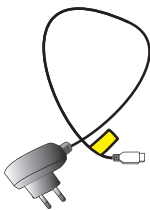
Headband Attachment



Earhook Attachment



Earbuds



Power Adapter



USB Cable



Installation CD  
(Jabra PC Suite and User Manual)

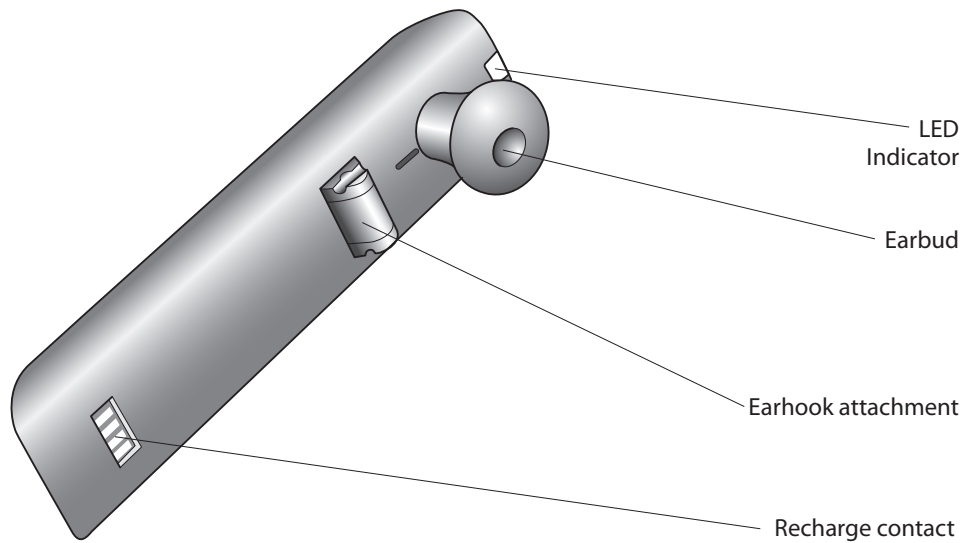
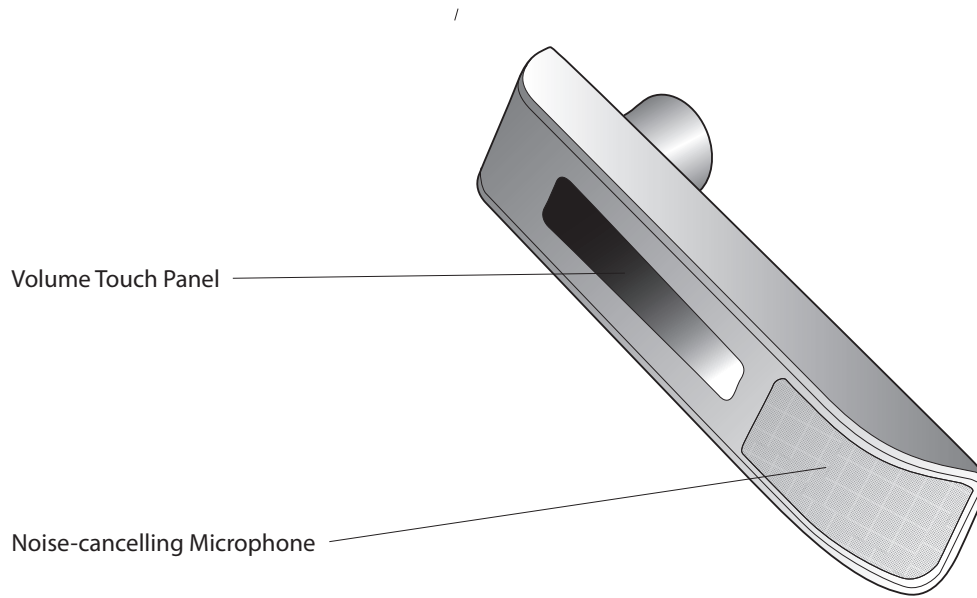
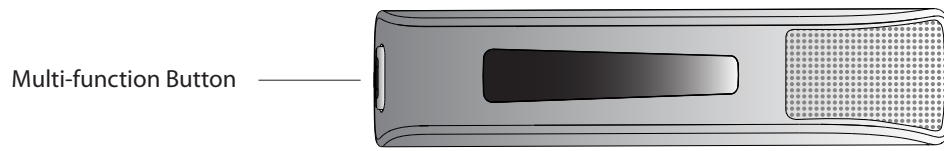


Quick Start Guide



Warning & Declaration  
Booklet

## 1.2 HEADSET



### 1.3 HEADSET ATTACHMENTS

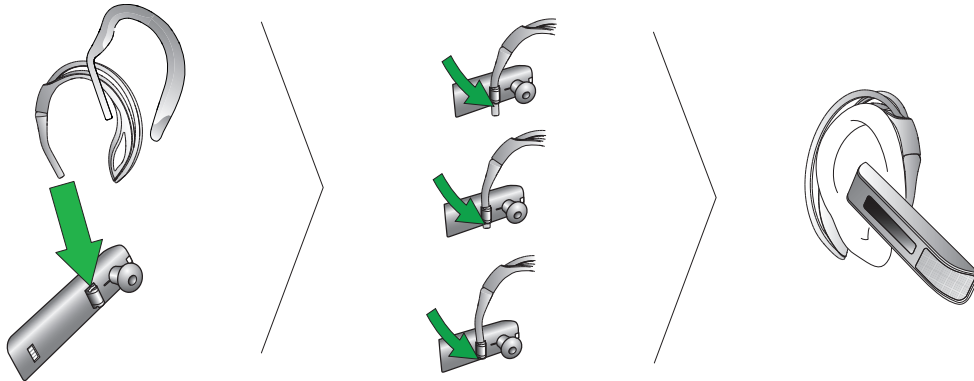
The Jabra GO 6430 headset comes supplied with the earhook and headband wearing style. The neckband wearing style is available as an optional accessory.

Wearing-styles can be worn on the left or right ear. Regardless of wearing style, ensure the microphone is positioned close to the mouth to maximise noise-cancelling and speech quality.



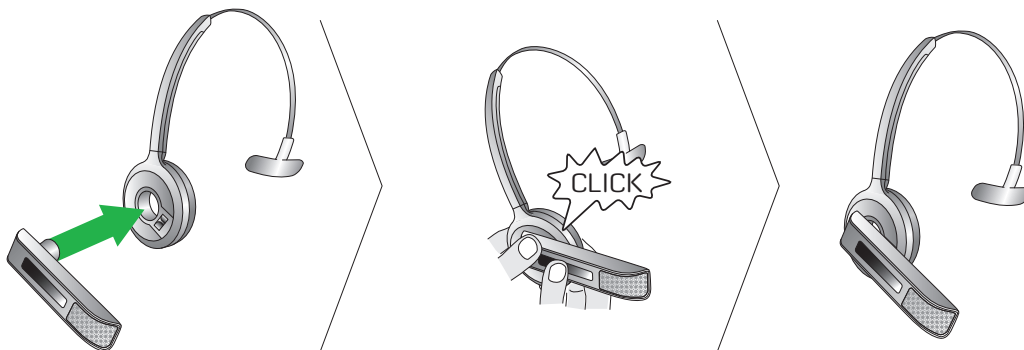
#### Attaching the Earhook

1. Remove the current wearing style attachment, if any.
2. Assemble the earhook wearing-style attachment for left or right ear use. If necessary, remove the earbud and replace with another size for best fit.
3. Slide the attachment up or down in its fitting until the headset fits comfortably to the ear.



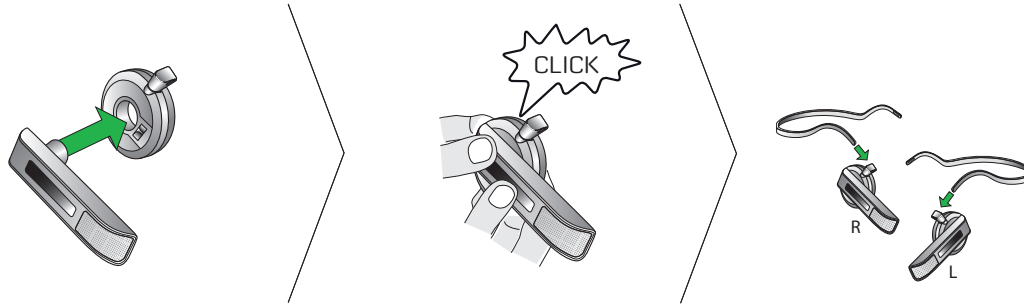
#### Attaching the Headband

1. Remove the current wearing style attachment, if any.
2. Align the headset earbud with the matching holes of the headband wearing style, as illustrated, and press firmly until they click into place (snap-to-click).
3. Adjust the length of the headband to fit against the head.
4. Position the microphone as close to the mouth as possible.



### Attaching the Neckband (optional accessory)

1. Remove the current wearing style attachment, if any.
2. Align the headset earbud with the matching holes of the neckband wearing style, as illustrated, and press firmly until they click into place (snap-to-click).
3. Position the microphone as close to the mouth as possible.



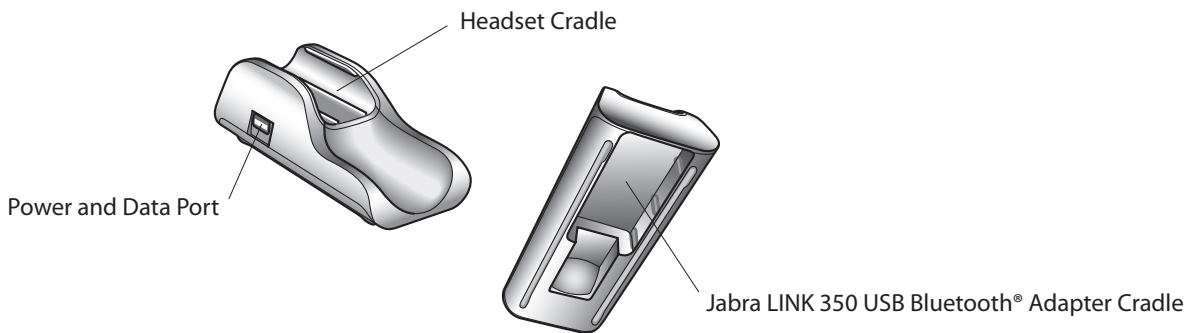
### 1.4 JABRA LINK 350 USB *BLUETOOTH*® ADAPTER

The Jabra LINK 350 USB *Bluetooth*® Adapter connects to a PC and enables the Jabra GO 6430 headset to function with a softphone on the PC.

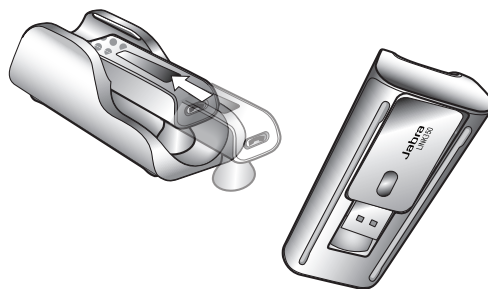


### 1.5 JABRA GO TRAVEL CHARGER

The Jabra GO Travel Charger charges the Jabra GO 6430, and has compartments for storing the Jabra GO 6430 and the Jabra LINK 930 USB *Bluetooth*® Adapter.



### Storing the Jabra GO 6430 headset and the Jabra LINK 350 USB *Bluetooth*® Adapter

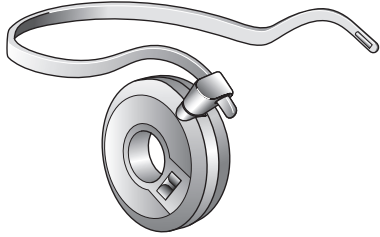


JABRA GO 6430



## 1.6 OPTIONAL ACCESSORIES

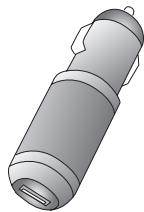
The following Jabra GO 6430 accessories are available separately.



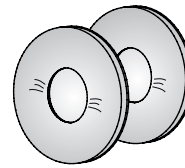
Neckband Attachment



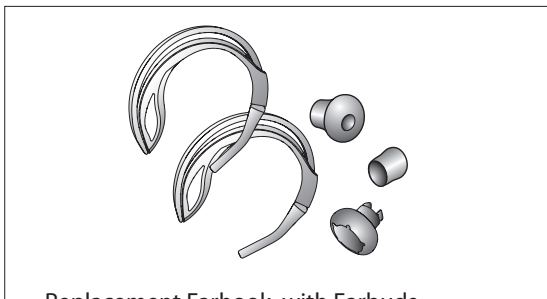
Replacement Headband Attachment



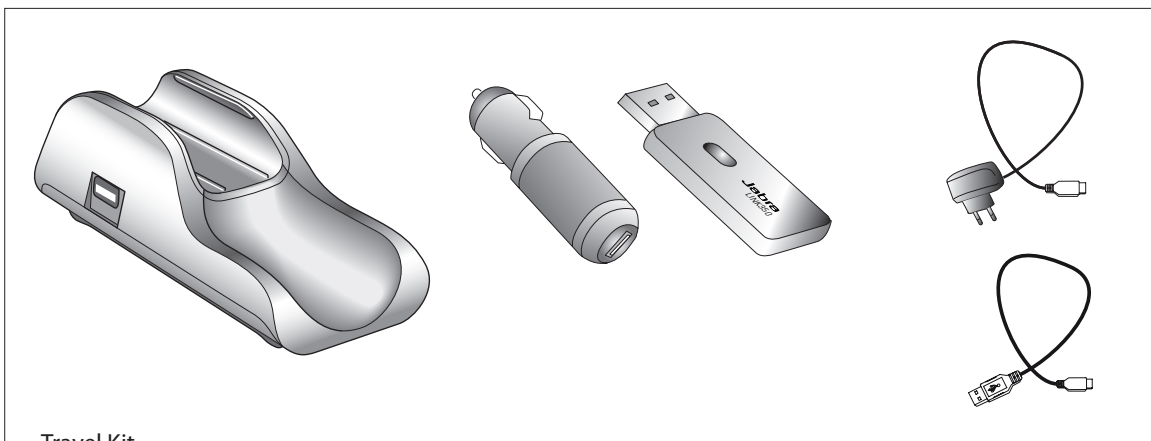
Car Charger



Replacement Ear Cushions



Replacement Earhook, with Earbuds



Travel Kit

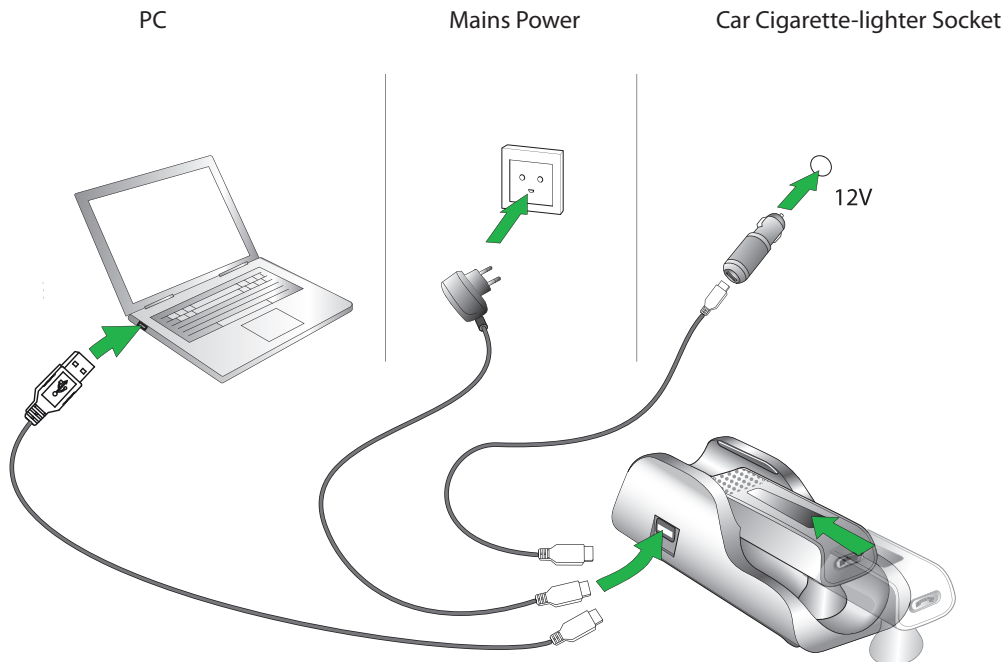
## 2. CONNECTING TO A PHONE

This chapter explains how to setup and connect the Jabra GO 6430 to a mobile phone or softphone (PC).

### 2.1 CHARGING THE HEADSET

To charge the headset, insert the headset into the travel charger and connect the travel charger to a power source, as illustrated below. The headset LED will change from red to yellow while charging, then to green when fully charged.

**NOTE:** The charge time when plugged into a PC or car cigarette-lighter socket is much longer than the charge time when plugged into the mains power.

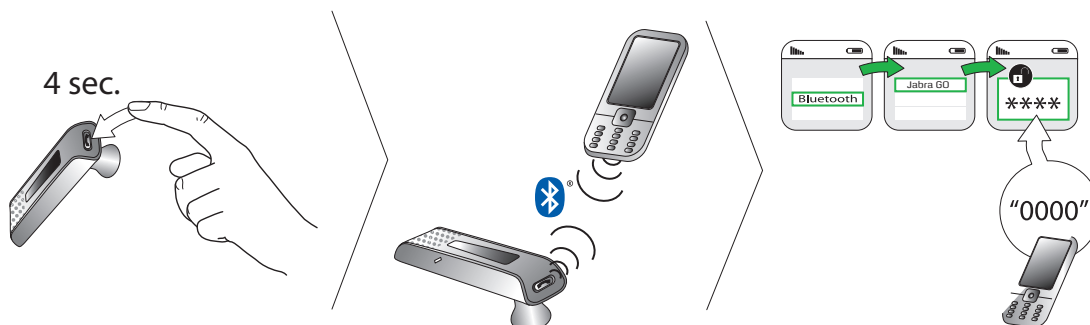


### 2.2 CONNECT TO MOBILE PHONE USING *BLUETOOTH*<sup>®</sup>

Connecting to a mobile phone with *Bluetooth*<sup>®</sup> is available directly between headset and mobile phone.

#### Connect to a mobile phone using *Bluetooth*<sup>®</sup>

1. Turn the headset off: press and hold the headset multi-function button for 4 seconds. The headset LED will flash 4 times and then the headset will turn off.
2. Put the powered off headset into pairing mode: press and hold the multi-function button for 4 seconds. The headset LED will turn blue to indicate the headset is in pairing mode.
3. Ensure that *Bluetooth*<sup>®</sup> is activated on the mobile phone and put the mobile phone into pairing mode. Refer to specific mobile phone documentation for details on how to enable pairing mode on the mobile phone.
4. The mobile phone will search for all available *Bluetooth*<sup>®</sup> devices. Select the Jabra GO 6430 from the list. If requested, enter 0000 (four zeros) as the headset pass code.
5. The mobile phone will now attempt to pair to the Jabra GO 6430. If successful, the Jabra GO 6430 and the mobile phone will be paired and ready to use. If the pairing attempt fails, please try again.



JABRA GO 6430

## 2.3 CONNECT TO SOFTPHONE (PC) USING THE JABRA LINK 350 USB BLUETOOTH® ADAPTER

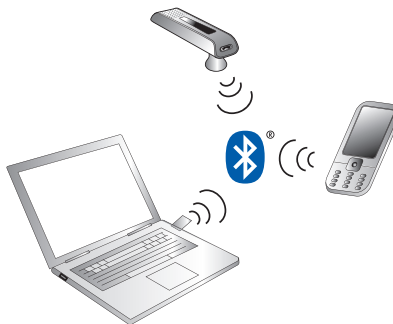
Connecting to a PC using the Jabra LINK 350 USB *Bluetooth*® Adapter will allow connectivity with a PC softphone (such as Microsoft Lync or Skype). Supported softphones have full functionality with the Jabra GO 6430 headset, such as answering and ending calls with the headset multi-function button. Unsupported softphones have only audio functionality with the headset, and have no interactivity with the headset call functions (such as answer/end call). For the latest list of supported softphones, please visit the Jabra website at [www.jabra.com/pcsuite](http://www.jabra.com/pcsuite).

### Connect the Jabra LINK 350 USB *Bluetooth*® Adapter to a PC, and configure softphone audio

1. Install Jabra PC Suite using the supplied installation CD. Refer to the Jabra PC Suite section of this manual for further information.
2. Plug the Jabra LINK USB 350 *Bluetooth*® Adapter into any available USB port on the PC. The adapter will install automatically when plugged in.
3. During the first three seconds the adapter LED will flash to indicate the current softphone mode (Microsoft Lync is default-selected). To toggle between Microsoft Lync and standard softphones tap the adapter button during the first three seconds.
4. After three seconds the adapter LED will indicate the current status of the Jabra GO 6430.

Adapter LED	Description
Solid green	The headset and adapter are paired and connected and the PC softphone is the current target. Go to step 4.
Solid yellow	The headset and adapter are paired and connected and the mobile phone is the current target. Go to step 4.
Flashing green	The headset and adapter are paired but not connected. Connection will occur automatically if the headset is powered on and within range. The headset indefinitely attempts connection when powered on, and the adapter LED will change to green or yellow when connected. When connected go to step 4.
Solid blue	The headset and adapter are not paired. The adapter is in pairing mode. To pair the headset and the adapter see the section below, Pairing the Jabra GO 6430 headset with the Jabra LINK 350 USB <i>Bluetooth</i> ® Adapter. Go to step 4 when paired and connected (solid green or yellow LED).

5. The Jabra GO 6430 is now ready to use with your softphone (PC).



### Pairing the Jabra GO 6430 headset with the Jabra LINK 350 USB *Bluetooth*® Adapter

The Jabra GO 6430 headset and Jabra LINK 350 USB *Bluetooth*® adapter are already paired from the factory. The pairing procedure below is only necessary when the pairing is lost.

1. Attach the Jabra LINK 350 USB *Bluetooth*® adapter to the PC, and turn the PC on.
2. Put the Jabra LINK 350 USB *Bluetooth*® adapter in pairing mode by pressing and holding the adapter button until the adapter LED turns blue.
3. If the headset is on, turn it off by pressing and holding the headset multi-function button until the headset LED flashes red three times and turns off.
4. Put the headset into pairing mode by pressing and holding the headset multi-function button until the headset LED turns blue.
5. Place the headset close to the Jabra LINK 350 USB *Bluetooth*® adapter and wait until pairing is successful. When pairing is successful the adapter and headset LEDs will flash blue 5 times.
6. The headset and Jabra LINK 350 USB *Bluetooth*® adapter are now paired and connected.

## 3. JABRA PC SUITE

Jabra PC Suite is a collection of software designed to support the Jabra GO 6430. For optimal functionality and management of the Jabra GO 6430, it is highly recommended to install Jabra PC Suite.

Jabra PC Suite consists of:

### **Jabra Control Center**

Settings management and monitoring of the Jabra GO 6430.

### **Jabra Device Service**

Manages the interaction between the Jabra GO 6430 and Jabra Control Center, and softphone drivers.

### **Jabra Firmware Updater**

Updates Jabra GO 6430 firmware, and Jabra LINK 350 USB *Bluetooth*® Adapter firmware.

### **Online Help**

Jabra PC Suite help section.

Jabra PC Suite additionally includes drivers for various softphones. For a list of supported softphones, visit [www.jabra.com/pcsuite](http://www.jabra.com/pcsuite).

### 3.1 INSTALL JABRA PC SUITE

To install Jabra PC Suite, launch the Jabra PC Suite setup file on the installation CD, or download the latest version from the Jabra website at [www.jabra.com/pcsuite](http://www.jabra.com/pcsuite).

### 3.2 ENABLING ADD-ON FEATURES

Some advanced Jabra GO 6430 features are available by purchasing a license key. To enable these features, the license key must be entered using Jabra Control Center. One or more license keys might have been supplied with the Jabra GO 6430, or purchased at any time later using the Jabra e-commerce web site. New add-on features may also become available through future software or firmware updates. Please see the Jabra PC Suite online help for complete details about how to purchase and enter new license keys.

### 3.3 FIRMWARE UPDATES

Firmware updates improve performance or add new functionality to your Jabra GO 6430 and the Jabra LINK 350 USB *Bluetooth*® Adapter.

#### **Update Jabra GO 6430 headset firmware**

1. Insert the Jabra GO 6430 headset into the travel charger, and ensure the travel charger is plugged into a USB port on the PC (not in an external docking station or hub).
2. Double-tap the multi-function button on the headset. The headset LED will turn purple.
3. Start the Jabra Firmware Updater by clicking on the Windows Start menu and selecting All Programs > Jabra > Jabra PC Suite > Jabra Firmware Updater.
4. Select the Jabra GO 6430 from the drop-down list in the firmware updater wizard.
5. Follow the step-by-step instructions to update your firmware. When the firmware update is complete, the headset will restart.

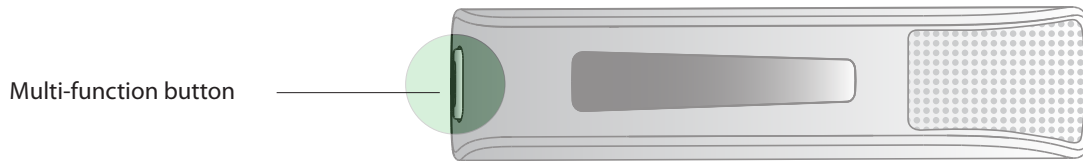
#### **Update Jabra LINK 350 USB *Bluetooth*® adapter firmware**

1. Insert the Jabra LINK 350 USB *Bluetooth*® adapter into a USB port on the PC (not in an external docking station or hub).
2. Start the Jabra Firmware Updater by clicking on the Windows Start menu and selecting All Programs > Jabra > Jabra PC Suite > Jabra Firmware Updater.
3. Select the Jabra LINK 350 USB *Bluetooth*® adapter from the drop-down list in the firmware updater wizard.
4. Follow the step-by-step instructions to update your firmware. When the firmware update is complete, the adapter will restart.

## 4. THE JABRA GO 6430 HEADSET FEATURES

### 4.1 HEADSET MULTI-FUNCTION BUTTON

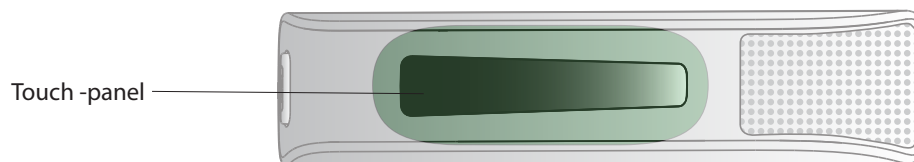
The headset multi-function button can answer calls, end calls, switch between held calls, and more, using a combination of taps, double-taps or presses.



Function	Tap	Double-tap	Press (hold 1-2 seconds)
Answer incoming call	✓		
End current call	✓		
Enable voice-activated dialing (mobile phones only)	✓		
Open phone line on target phone	✓		
Call last number dialed		✓	
Reject incoming call (when on a call)		✓	
Reject incoming call (when not on a call)			✓
Put current call on hold, and accept incoming call			✓
Switch between target phones			✓
Power headset on			✓
Power headset off			✓ (5 secs)
Activate <i>Bluetooth</i> ® pairing mode (when power is off)			✓ (5 secs)

### 4.2 HEADSET TOUCH PANEL

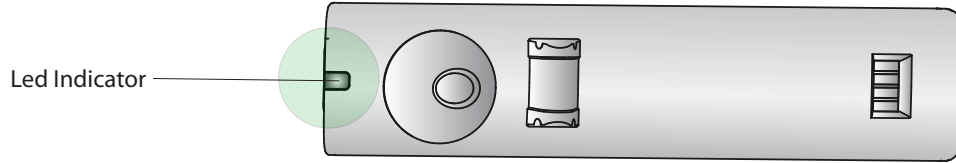
The touch panel is a touch-sensitive panel that controls the headset speaker volume and microphone mute. Changes made to the speaker volume apply independently to softphone (PC) or mobile phone.



Increase speaker volume	Decrease speaker volume	Mute microphone
Slide finger up the touch panel (away from mouth)	Slide finger down the touch panel (toward the mouth)	Double-tap

### 4.3 HEADSET LED INDICATOR

The LED indicator indicates the headset status.



Headset state	LED when battery is full (click to view)	LED when battery is low (click to view)
Idle	▶ ○	▶ ○
Not connected	▶ ○	▶ ○
Call active	▶ ○	▶ ○
Ringing	▶ ○	▶ ○
Power on	▶ ○	▶ ○
Power off	▶ ○	▶ ○
Pairing	▶ ○	▶ ○
Pairing succeeded	▶ ○	▶ ○
Charging	▶ ○	▶ ○
Fully charged	▶ ○	

## 4.4 HEADSET AUDIO INDICATORS

The headset plays a variety of audio tones to indicate headset status and actions.

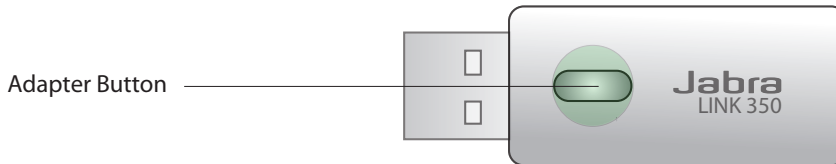
Action	Audio Sample (click to listen)	Action	Audio sample (click to listen)
Power on		Incoming softphone call	
Power off		Incoming mobile phone call	
Button tap		Incoming call on another phone while on call (call collision)	
Button double-tap		Target phone changed to mobile phone	
Button press		Target phone changed to softphone	
Maximum volume reached		Call ended	
Minimum volume reached		Battery low	
Microphone muted		Call placed on hold (call waiting)	
		Pairing succeeded	

## 5. JABRA LINK 350 USB *BLUETOOTH*<sup>®</sup> ADAPTER FEATURES

The Jabra LINK 350 USB *Bluetooth*<sup>®</sup> Adapter connects to a PC and enables the headset to function with a softphone on the PC.

### 5.1 JABRA LINK 350 USB *BLUETOOTH*<sup>®</sup> ADAPTER BUTTON

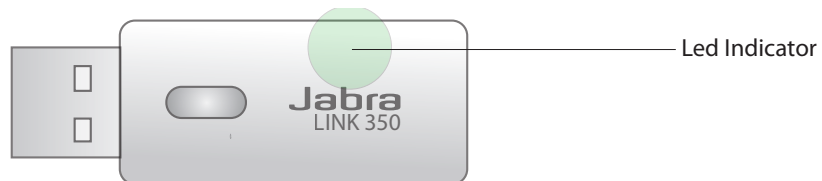
The Jabra LINK 350 USB *Bluetooth*<sup>®</sup> Adapter has a single button that has three functions depending on what mode the adapter is in.



Function	Tap	Press (hold 1-3 sec)
Switch between Microsoft Lync softphone (default) and the standard softphone mode (first three seconds after adapter is plugged in).	✓	
Enter pairing mode (when not in pairing mode).		✓
Cancel pairing (when already in pairing mode).		✓

### 5.2 JABRA LINK 350 USB *BLUETOOTH*<sup>®</sup> ADAPTER VISUAL INDICATORS

The Jabra LINK 350 USB *Bluetooth*<sup>®</sup> Adapter has an LED to indicate the status of the adapter and its connections.



LED Indicator	USB Adapter Status
Flashing red	Microsoft Lync softphone mode is selected in the adapter
Double-flashing red	Standard softphone mode is selected in the adapter
Constant green	Connected and ready for use, softphone is current target
Constant yellow	Connected and ready for use, mobile phone is current target
Slow-flashing green	Paired but not connected
Constant blue	Pairing mode
Quintuple (5x) blue flash	Pairing succeeded
Moderate blue flash	On a call or audio streaming
Triple blue flash	Ringling
Constant red	Muted



## 6. CALL MANAGEMENT

### 6.1 MAKING CALLS, ANSWERING CALLS, AND ENDING CALLS

Mobile Phone or Softphone (PC)	
Make a call	<ol style="list-style-type: none"><li>1. Put on the headset.</li><li>2. If necessary, press the headset multi-function button to switch between mobile phone or softphone (PC). Set the desired phone as target phone.</li><li>3. Dial the number using the mobile phone or softphone, and press the call button. The audio will automatically transfer to the headset.</li></ol>
Answer call	Tap the headset multi-function button, or use the default mobile phone or softphone(PC) controls.
End call	Tap the headset multi-function button, or use the default mobile phone or softphone(PC) controls.

### 6.2 CALL WAITING

Call waiting allows a current call to be placed on hold, and an incoming call on the same phone to be answered (supported mobile phones or softphones (PC) only). Check specific mobile phones or softphone documentation for call waiting compatibility.

	Headset Multi-function Button
Accept incoming call, and put current call on hold	Press (1-2 secs)
Accept incoming call, and end current call	Tap
Reject incoming call, and remain on current call	Double-tap
Switch between current call, and call on hold	Press (1-2 secs)

### 6.3 CALL COLLISION

Call collision occurs when there is a current call on one phone, and an incoming call on another phone. (Example: you have a current call on a softphone, and an incoming call on a mobile phone connected to the Jabra GO 6430).

Call collision *cannot* be managed using the headset multi-function button, except to end the current call (tap multi-function button) and accept the incoming call (tap multi-function button). Accept or reject the incoming call using the incoming call's phone interface. If the incoming call is accepted the current call will be placed on hold, until the incoming call is ended.

### 6.4 LAST NUMBER REDIAL

The Jabra GO 6430 can redial the last number dialed (supported softphones and mobile phones only). Check specific softphone or mobile phone documentation for last number redial compatibility.

#### Last number redial

1. If necessary, press the headset multi-function button to switch between the mobile phone or softphone (PC) and set the target phone.
2. When not on a call, double-tap the headset multi-function button to redial the last number called.

## 7. ADVANCED JABRA GO 6430 FEATURES

### 7.1 SAFETONE™ HEARING PROTECTION

SafeTone™ provides effective hearing protection against potential risks, such as acoustic shock and noise exposure. SafeTone™ consists of two components, PeakStop™ and IntelliTone™.

#### **PeakStop™ acoustic shock protection**

PeakStop™ automatically suppresses sounds over 118dB(A), protecting hearing from acoustic shock. PeakStop™ is only available from Jabra.

#### **IntelliTone™ noise-exposure protection**

IntelliTone™ offers four levels of protection against acoustic shock and noise-exposure. IntelliTone™ settings can be changed via the Jabra Control Center, under the 'Audio' tab. IntelliTone™ is only available from Jabra.

Protection level	Criteria
Level 0 (default)	Basic protection (over 118dB(A))
Level 1*	Less than 4 hours on phone/day
Level 2*	4-8 hours on phone/day
Level 3*	More than 8 hours on phone/day
Level 4 (TT4)	Recommended Australian protection level (Telstra)

\*Compliant with Directive 2003/10/EC of the European Parliament and Council of 6 February 2003.

### 7.2 WIRELESS RANGE

The Jabra GO 6430 supports a maximum wireless range of up to 100 meters. Physical obstructions and electromagnetic interference may shorten this range.

Headset sound quality may slowly deteriorate the further the headset is away from the base, and may improve the closer the headset is to the base. When the headset is completely out of range, a unique tone (three quick descending notes) will be played in the headset every few seconds.

If the headset is on a call when moved out of range, the audio will be lost; however the call will remain active at the base for 120 seconds. To restore audio to the call, move the headset back in range of the base.

If the headset remains out of range of the base for more than an hour, the headset will power down to conserve battery.

### 7.3 WIDEBAND AUDIO

The Jabra GO 6430 supports both wideband and narrowband audio. Wideband audio offers better sound quality at a reduced battery time.

Narrowband is default-enabled for desk phones. Wideband is default-enabled for softphones. Mobile phones cannot use wideband audio.

#### **Change wideband audio settings**

1. Launch Jabra Control Center, and select the 'Audio' tab.
2. Tick the relevant checkbox under 'Enable wideband audio for', and then click Apply.

### 7.4 VOICE ANNOUNCEMENTS

Choose to hear an English voice announcement or a musical tone to indicate switching between a desk phone, softphone or mobile phone.

#### **Change voice announcement setting**

1. Launch Jabra Control Center, and select the 'Headset' tab.
2. Tick the relevant setting under 'Target change indication', and then click Apply.

## 7.5 TONE SETTINGS

Choose between three equalizer presets available for all sounds: Treble, Normal (default) and Bass.

### **Change tone settings**

1. Launch Jabra Control Center, and select the 'Audio' tab.
2. Tick the relevant setting under 'Tone setting', and then click Apply.

## 7.6 AUTOMATIC PC AUDIO DETECTION

The Jabra GO 6430 can be configured to automatically open an audio link between headset and PC when sound is detected on the PC. Automatic PC audio detection is default-enabled.

### **Enable/disable PC audio detection**

1. Launch Jabra Control Center, and select the 'Audio' tab.
2. Select the relevant setting under 'PC audio control', and then click Apply.

## 7.7 LISTENING TO MUSIC

To listen to music played on a PC, an audio link between the Jabra GO base and the PC must be opened. When an audio link is opened and no calls are active, any music or sounds played on the PC (including music from a media player) will play in the headset.

### **Open/Close an audio link between base and PC**

1. Launch Jabra Control Center.
2. Click the 'open/close audio link' button in the top toolbar.

Alternatively, right-click the Jabra icon in Windows taskbar, and select 'Open Audio Link' or 'Close Audio Link'.

## 7.8 THEFT PROTECTION

The base includes a Kensington Security Slot for attaching a security cable. To secure the base to your desk, purchase any safety cable usable with the Kensington Security Slot and follow the instructions included with the cable.

## 8. FAQs AND TROUBLESHOOTING

### **Q Why won't my headset pair with my mobile phone?**

A Check the following:

- Make sure that the headset is charged and in pairing mode. If the headset is already turned on, use the multi-function button to turn it off (press and hold down for 4 seconds), then turn it back on in pairing mode (press and hold for 4 seconds). In pairing mode, its LED should be a constant blue color. If the headset LED is red, the headset needs charging.
- Make sure that *Bluetooth*® is active on your mobile phone and put it into *Bluetooth*® pairing mode.

### **Q Why won't my headset pair with the Jabra LINK 350 USB *Bluetooth*® Adapter?**

A Check the following:

- Make sure that the headset is charged and in pairing mode. If the headset is already turned on, use the multi-function button to turn it off (press and hold down for 4 seconds), then turn it back on in pairing mode (press and hold for 4 seconds). In pairing mode, its LED should be a constant blue color. If the headset LED is red, the headset needs charging.
- Make sure the Jabra LINK 350 USB *Bluetooth*® adapter is in pairing mode. Plug the adapter into a PC, and then press and hold the adapter button until the adapter LED turns blue.

### **Q Why doesn't my computer detect the Jabra LINK 350 USB *Bluetooth*® Adapter?**

A Try connecting the USB *Bluetooth*® adapter to another USB port on the PC. Also, please note that it must be a direct connection - i.e. with no USB hub in between.

### **Q Why doesn't the headset work with my mobile phone or softphone (PC)?**

A Check the following:

- Make sure the headset is charged. The LED is a constant green when fully charged.
- Make sure the headset is within range of the USB *Bluetooth*® adapter or mobile phone.
- The adapter/mobile phone and the headset may no longer be paired.

### **Q Why can I not hear anything in my headset when using my mobile phone?**

A Check the following:

- Make sure the headset and mobile phone are paired and within range.
- Increase the speaker volume on the headset by sliding your finger along the touch panel on the headset.

### **Q My earhook/headband/neckband is broken. How do I get another one?**

A Contact your local Jabra supplier to place an order.

### **Q Why do I hear a low noise in the headset when there is silence at the other end?**

A The headset speaker volume might be too high. To decrease the volume, slide your finger down the headset touch panel.

### **Q Why can I not hear any sound, or listen to music from my PC, in my headset?**

A Check the following:

- Make sure the Jabra LINK 350 is selected as the current audio device both in Windows sound control panel and in the application you are using.
- Make sure the audio link to the PC is open. Right-click the Jabra Device icon in the Windows taskbar .
- Make sure softphone (PC) is enabled in Jabra PC Suite.

### **Q Does Wi-Fi interfere with Jabra GO 6430?**

A No. The Jabra GO 6430 uses adaptive frequency hopping, avoiding channels that are blocked by Wi-Fi.

### **Q Is it possible to listen in on calls with the Jabra GO 6430?**

A The risk of unauthorized access to communication via a *Bluetooth*® headset is very limited. The Jabra GO 6430 uses 128-bit encryption.

### **Q What is the range on the Jabra GO 6430?**

A The Jabra GO 6430 headset supports the following maximum ranges:

- When connected to the Jabra LINK 350 the range is up to 100m.
- When talking on (most) mobile phones the range is up to 25m.

### **Q What is the talk time for a Jabra GO headset?**

A Approximately 6 hours. Talk time depends on the device the headset is connected to.

## 9. TECHNICAL SPECIFICATIONS

### 9.1 JABRA GO 6430 HEADSET

**Wearing styles:**

Ear hook, headband, neckband (supplied or available as optional accessories).

**Dimensions:**

18mm x 76mm x 22.5mm.

**Weight:**

<18 g.

**Talk time:**

Up to 6 hours.

**Standby time:**

At minimum 100 hours.

**Charge time:**

- Charging from mains power: 0% - 80% in 25 minutes.
- Charging from car cigarette-lighter socket: 0% - 80% in 25 minutes, providing the charger has USB fast charge termination.
- Charging from PC (USB): from 0% - 80% in 60 minutes.

**Operating environment:**

-10°C to +60°C (when charging: 0°C to +45°C); Up to 95% RH non condensing.

**Call control:**

Headset multi-function button support for answer call, end call, voice-activated dialing, reject call, redial, swap held calls.

**Volume control and microphone mute:**

Controlled via touch panel on headset.

**Visual indicator:**

Multi-colored LED indicates call status, battery level, pairing status and other events.

**Audio indicators:**

Tones indicate incoming calls, low battery, volume level, microphone muting and other events; target phone can be indicated by English voice tag or target-specific melody.

**Bluetooth® version:**

BT 2.1.

**Bluetooth® range:**

Up to 100m when paired with a *Bluetooth*® wireless technology Class 1 device; up to 25m when paired with a *Bluetooth*® wireless technology Class 2 device.

**Bluetooth® profiles:**

Headset (HSP 1.1), hands-free (HFP 1.5), device identification (DIP 1.3).

**Bluetooth® pairing table:**

Up to 8 trusted devices.

**Speaker(s):**

Dual Noise Blackout microphones.

**Sound quality:**

DSP noise reduction; echo cancellation; tone control; narrowband and wideband audio (selectable per phone type).

**Firmware update:**

Downloadable from PC.

**Recharge:**

While docked in the Travel Charger and connected to the mains power, PC or car cigarette-lighter socket.

**PC-based configuration:**

All settings can be stored and loaded from a PC for backup and mass deployment.

### 9.2 JABRA GO 6430 HEADSET BATTERY

**Battery type:**

Lithium Ion.

**Battery capacity:**

125 mA/h, typical.

**Battery lifetime:**

Minimum 500 charge cycles (over 3 years when used for 8 hours a day).

**Shelf life:**

The battery holds a charge for at least 6 months in the off state before recharge is required.

**Replacement:**

The battery cannot be replaced.

### 9.3 JABRA LINK 350 USB *BLUETOOTH*<sup>®</sup> ADAPTER

**Dimensions:**

18.5mm x 53mm x 7.7mm.

**Operating environment:**

-10°C to +60°C; Up to 95% RH non condensing.

**PC Connection:**

Standard USB

**Bluetooth<sup>®</sup> version:**

BT 2.1, Class 1.

**Bluetooth<sup>®</sup> range:**

Up to 100m when paired with a Bluetooth<sup>®</sup> wireless technology Class 1 device; up to 25m when paired with a Class 2 device.

**Bluetooth<sup>®</sup> profiles:**

Headset (HSP 1.1), hands-free (HFP 1.5), device identification (DIP 1.3).

**Bluetooth<sup>®</sup> pairing table:**

Up to 8 trusted devices.

**Simultaneous Bluetooth<sup>®</sup> connections:**

Up to 2.

**Bluetooth<sup>®</sup> audio bandwidth:**

Narrowband or wideband.

**Firmware update:**

Downloadable from PC.

**Adapter button:**

Bluetooth<sup>®</sup> pairing, Bluetooth<sup>®</sup> connections and some call management.

**Visual indicators:**

Multicolor LEDs indicate pairing status, connection status, on-call status and other details.

**PC-based configuration:**

All settings can be stored and loaded from a PC for backup and mass deployment.

**Softphone support:**

Full call handling for Skype, Microsoft Office Communicator, Avaya and Cisco IP Communicator; for other softphones see headset as a standard sound card; support for additional softphones may be added via driver updates for the PC. For the latest updates, see [jabra.com/pcsuite](http://jabra.com/pcsuite) on the web.

### 9.4 JABRA GO 6430 TRAVEL CHARGER

**Dimensions:**

34mm x 83.5mm x 26.5mm.

**Storage compartments:**

Holds both Jabra GO headset and Jabra LINK 350 USB Bluetooth<sup>®</sup> adapter.

**Capacity:**

5V / 500 mA.

**Power and data port:**

Mini USB.

**Connectivity:**

- Mains power socket, using supplied mains power adapter.
- PC (USB), using supplied mini USB-to-USB cable.
- Car cigarette-lighter socket, using car charge adapter (optional accessory).

## 9.5 MATERIALS AND ALLERGIES

The headband attachment is made of stainless steel and does not have a nickel-coated surface. Nickel release from the headband is 0.02 µg/cm<sup>2</sup>/week, which is below the 0.50 µg/cm<sup>2</sup>/week limit established by EU Directive 94/27/EF. The stainless steel alloy was tested for nickel release in accordance with the European standard EN 1811:1998.

Other wearing-style attachments are made of plastic and contain no known allergens. The leatherette ear cushions do not contain vinyl. The products contain no nickel, chrome or natural rubber that can come into contact with users' skin.

## 9.6 PRODUCT DISPOSAL

Please dispose of the headset according to local regulations and recycle when possible. Do not dispose as household waste. Do not dispose of the headset in a fire as the battery may explode. Batteries may also explode if damaged.

## 9.7 CERTIFICATIONS AND SAFETY APPROVALS

### **CE**

This product is CE marked according to the provisions of the R & TTE Directive (99/5/EC). Hereby, GN declares that this product is in compliance with the essential requirements and other relevant provisions of Directive 1999/5/EC. For further information, please consult <http://www.jabra.com>.

Within the EU, this device is intended for use in Austria, Belgium, Cyprus, Czech Republic, Denmark, Estonia, Finland, France, Germany, Greece, Hungary, Ireland, Italy, Latvia, Lithuania, Luxembourg, Malta, Poland, Portugal, Slovakia, Slovenia, Spain, Sweden, The Netherlands, United Kingdom, and within EFTA in Iceland, Norway and Switzerland.

### **FCC**

This device complies with part 15 of the FCC Rules. Operation is subject to the following two conditions: (1) This device may not cause harmful interference, and (2) this device must accept any interference received, including interference that may cause undesired operation.

Users are not permitted to make changes or modify the device in any way. Changes or modifications not expressly approved by Jabra will void the user's authority to operate the equipment.

This equipment has been tested and found to comply with the limits for a Class B digital device, pursuant to part 15 of the FCC Rules. These limits are designed to provide reasonable protection against harmful interference in a residential installation. This equipment generates, uses and can radiate radio frequency energy and, if not installed and used in accordance with the instructions, may cause harmful interference to radio communications. However, there is no guarantee that interference will not occur in a particular installation. If this equipment does cause harmful interference to radio or television reception, which can be determined by turning the equipment off and on, the user is encouraged to try to correct the interference by one or more of the following measures:

- Reorient or relocate the receiving antenna.
- Increase the separation between the equipment and receiver.
- Connect the equipment into an outlet on a circuit different from that to which the receiver is connected.
- Consult the dealer or an experienced radio/TV technician for help.

### **Industry Canada**

Operation is subject to the following two conditions: (1) This device may not cause interference and (2) This device must accept any interference, including interference that may cause undesired operation of the device. The term "IC:" before the certification/registration number only signifies that registration was performed based on a Declaration of Conformity indicating that Industry Canada technical specifications were met. It does not imply that Industry Canada approved the equipment.

### **Patents and design registration pending international**

# Jabra®

A BRAND BY

**GN Netcom**

© 2011 GN Netcom A/S. All rights reserved. Jabra® is a registered trademark of GN Netcom A/S. All other trademarks included herein are the property of their respective owners. (Design and specifications subject to change without notice).

MADE IN CHINA  
TYPE: 9400HS/BS



[www.jabra.com](http://www.jabra.com)

32-00684 RevE